

Evacuation Plan for Panguitch City: In Case of Panguitch Lake Dam Failure

Overview:

This evacuation plan provides detailed guidance for residents of Panguitch City in the event of a Panguitch Lake Dam failure. The plan prioritizes rapid response actions to move residents out of harm's way, especially for areas directly downstream and west of Main Street.

Immediate Actions for All Residents:

1. **Immediate Evacuation Alert:** Upon receiving an evacuation alert, do not delay. Gather your family and essential items quickly and close and lock windows and doors before evacuating. Notifications will be given through wireless emergency alerts (WEA) news media, social media, reverse 911, and local lights and sirens.
2. **Evacuation Kit:** Ensure your kit includes water, non-perishable food, medications, important documents, and any special needs items for children and the elderly.
3. **Communication Plan:** Make sure all family members know who to contact and where to go if you are separated during the evacuation.

For Families with Children in Schools:

- **School Evacuation Procedures:** In the event of an evacuation, parents should proceed directly to the indicated pickup points on the school evacuation map, utilizing the designated routes as shown in the attached map.
- **Student Safety:** Trust that school personnel are trained to handle such situations and will keep your children safe.

For Residents West of Main Street and Downstream of Panguitch Lake:

- **Urgent Evacuation:** Residents in these areas must evacuate immediately eastward, away from the path of potential floodwaters.
- **Designated Evacuation Routes:** Utilize local roads to access Highway 89 and go East toward Hatch. Law enforcement will be available in key areas to direct traffic.
- **Avoid Floodwaters:** Do not attempt to cross flowing water or flooded roads. Floodwater can be deeper and faster-moving than it appears. "Turn around, don't drown."

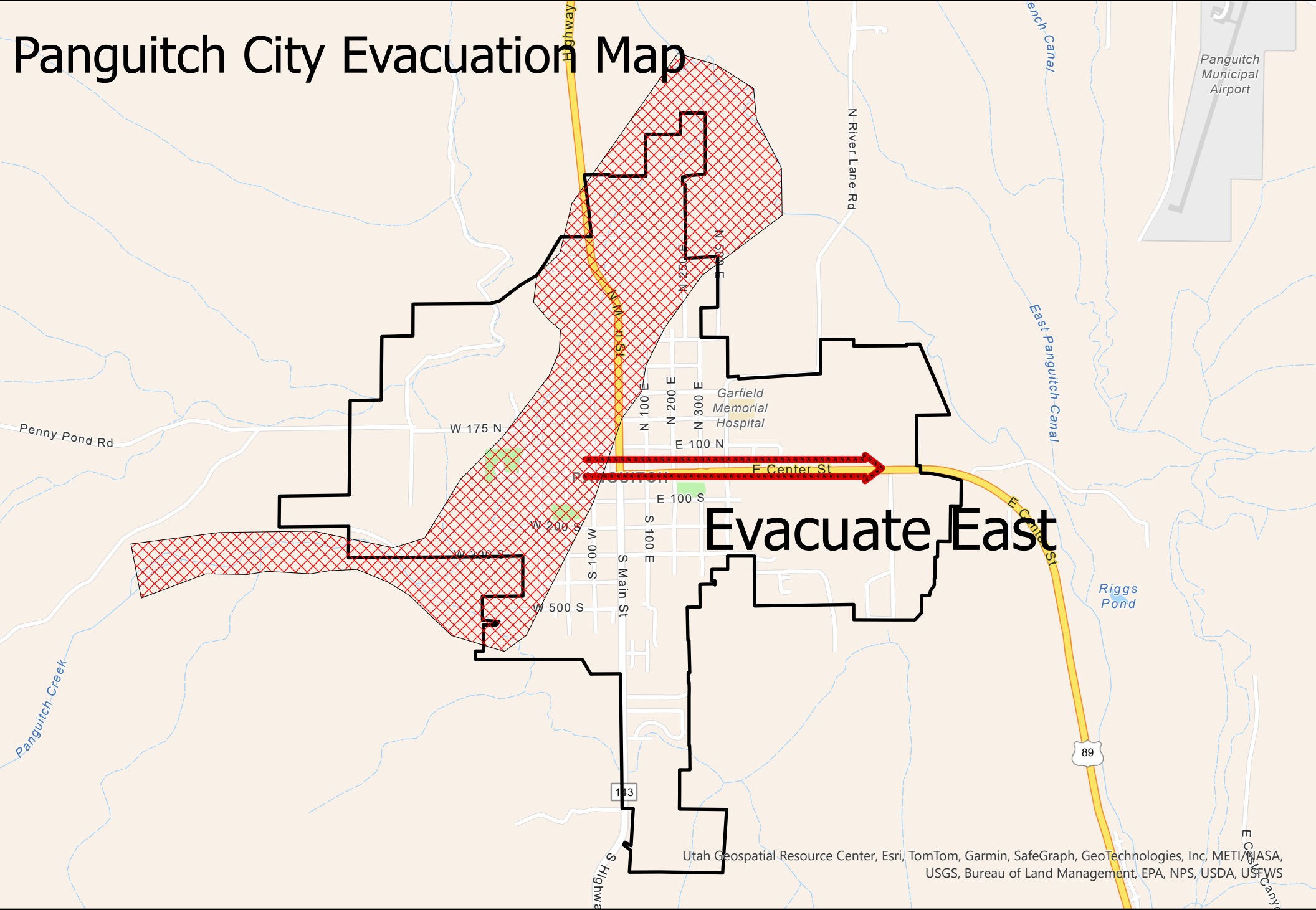
Evacuation Routes:

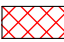

- **Primary Routes:** Utilize local roads to access Highway 89 and go East toward Hatch. Law enforcement will be available in key areas to direct traffic.
- **Alternative Routes:** In case primary routes are compromised, listen to local authorities for alternative directions.

Post-Evacuation:

- **Stay Informed:** Use battery-powered radios or mobile devices to keep up with official news and instructions about when it is safe to return or if additional actions are necessary.
- **Property Safety:** Do not return home until authorities have declared it safe. Be cautious of water damage, hidden debris, and potential structural weaknesses.

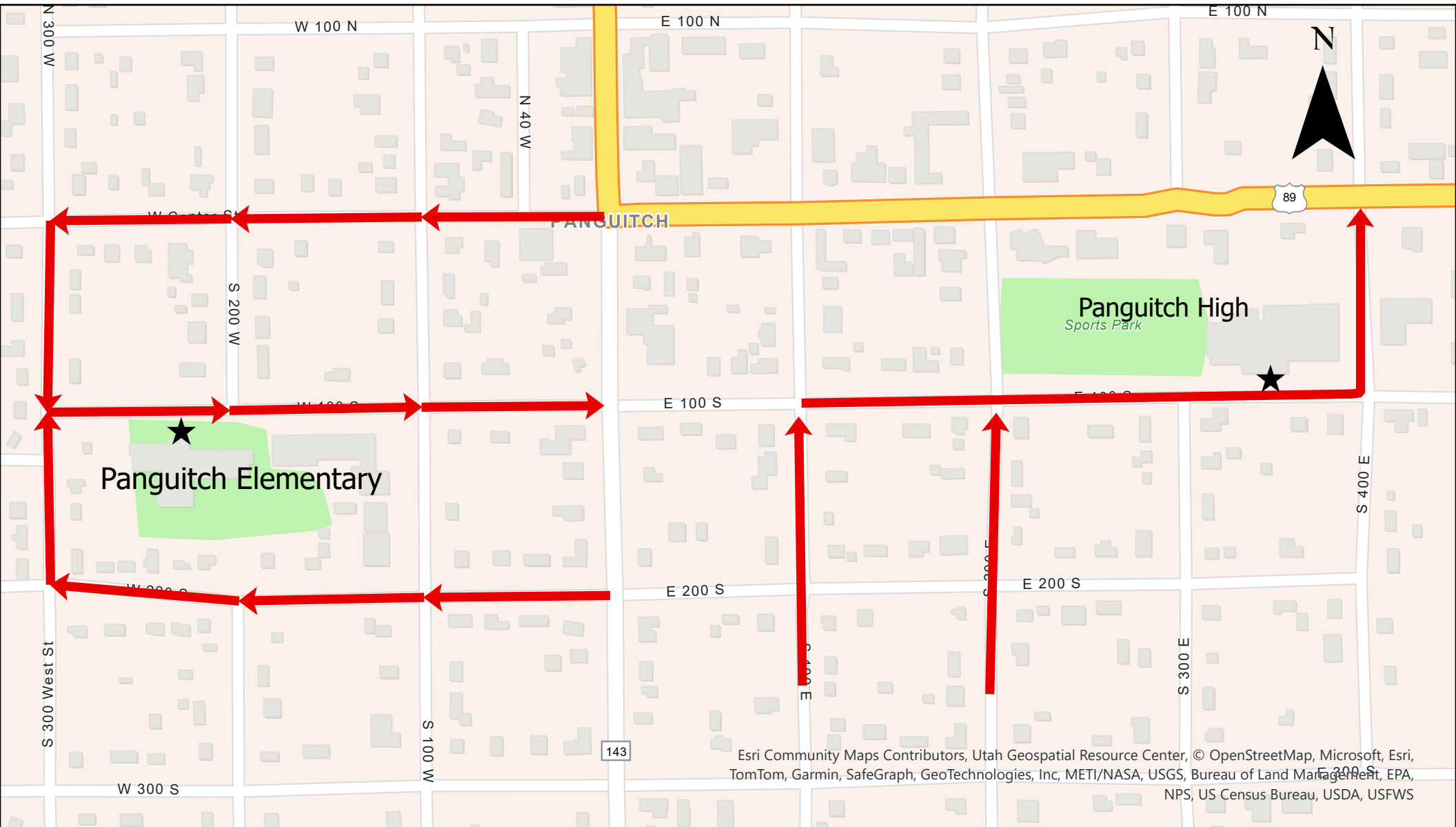
Panguitch City Evacuation Map





-  Highest Potential Flood Area
-  Panguitch City

Utah Geospatial Resource Center, Esri, TomTom, Garmin, SafeGraph, GeoTechnologies, Inc, METI/NASA, USGS, Bureau of Land Management, EPA, NPS, USDA, USFWS

Panguitch Schools Evacuation Routes



-  Evacuation Routes
-  Pickup Area

In Case of Evacuation:

- 1: Remain calm and do not panic.
- 2: Proceed to designated pickup area.
- 3: Follow instructions from school staff and law enforcement